



**BLEND**  
**HOME**

*2015 Collection*



# Table of Contents

ACME HEADBOARD.....	3	SOHO HEADBOARD.....	13
CLUB HEADBOARD.....	4	STUDIO HEADBOARD.....	14
COSTA HEADBOARD.....	5	SUITE HEADBOARD.....	15
DASH HEADBOARD.....	6	TOWNHOUSE HEADBOARD.....	16
FAB HEADBOARD.....	7	PENTHOUSE HEADBOARD.....	17
MODA HEADBOARD.....	8	RESORT HEADBOARD.....	18
NUVO HEADBOARD.....	9	FABRIC CHOICES.....	19-24
PARK HEADBOARD.....	10	HEADBOARD INFO.....	25
PRIME HEADBOARD.....	11	ORDER FORM.....	26
SOBE HEADBOARD.....	12	NOTES.....	27

## CONTACT US

**P** 800.590.8978 **F** 800.886.0166  
MARIO@BLENDHOSPITALITY.COM

WWW.BLENDHOMEFURNISHINGS.COM





ACME

**DETAILS**

Standard size is 60" H  
Available in any custom height

MADE IN THE USA



**PICTURED**

Shown as 80" H x 77" W

WHI-2138 ELEPHANT  
available in all Whisper &  
Hemingway Linen Collection colors



# CLUB



## DETAILS

Standard size is 60" H  
Available in any custom height

MADE IN THE USA



## PICTURED

Shown as 80" H x 77" W  
WHI-2130 KHAKE  
available in all Whisper &  
Hemingway Linen Collection colors



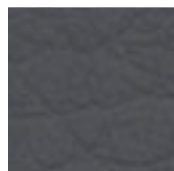


# COSTA

## DETAILS

Standard size is 30" H  
Available in any custom height

MADE IN THE USA



## PICTURED

Shown as 30" H x 77" W

WHI-2139 CHARCOAL  
available in all Whisper &  
Hemingway Linen Collection colors



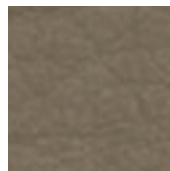
# DASH



## DETAILS

Standard size is 40" H  
Available in any custom height

MADE IN THE USA



## PICTURED

Shown as 40" H x 77" W  
WHI-2120 ANTELOPE  
available in all Whisper &  
Hemingway Linen Collection colors





FAB

**DETAILS**

Standard size is 60" H  
Available in any custom height

MADE IN THE USA



**PICTURED**

Shown as 80" H x 77" W

WHI-2141 CASHEW  
available in all Whisper &  
Hemingway Linen Collection colors



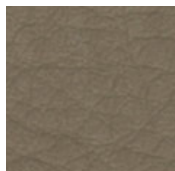
# MODA



## DETAILS

Standard size is 60" H  
Available in any custom height

MADE IN THE USA



## PICTURED

Shown as 75" H x 77" W  
WHI-2120 ANTELOPE  
available in all Whisper &  
Hemingway Linen Collection colors





NUVO

**DETAILS**

Standard size is 60" H  
Available in any custom height

MADE IN THE USA



**PICTURED**

Shown as 75" H x 77" W  
ZANDER PEARL GREY  
ZANDER DOVE GREY  
ZANDER AUSTER

available in all Whisper & Hemingway Linen Collection colors  
WWW.BLENDDHOMEFURNISHINGS.COM | 800.590.8978 | 9



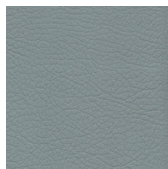


# PARK

## DETAILS

Standard size is 60" H  
Available in any custom height

MADE IN THE USA



## PICTURED

Shown as 60" H x 77" W  
WHI-2134 PATINA  
available in all Whisper &  
Hemingway Linen Collection colors



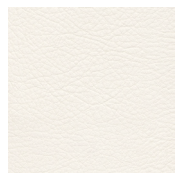


# PRIME

## DETAILS

Standard size is 60" H  
Available in any custom height

MADE IN THE USA



## PICTURED

Shown as 60" H x 77" W

WHI-2117 BONE  
available in all Whisper &  
Hemingway Linen Collection colors



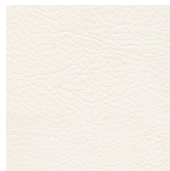
SOBE



**DETAILS**

Standard size is 45" H  
Available in any custom height

MADE IN THE USA



**PICTURED**

Shown as 45" H x 137" W  
WHI-2117 BONE  
available in all Whisper &  
Hemingway Linen Collection colors



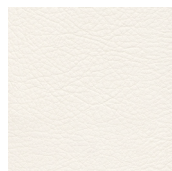


# SOHO

## DETAILS

Standard size is 48" H  
Available in any custom height

MADE IN THE USA



## PICTURED

Shown as 48" H x 77" W

WHI-2117 BONE  
available in all Whisper &  
Hemingway Linen Collection colors



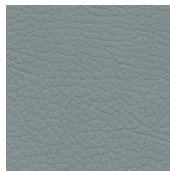


# STUDIO

## DETAILS

Standard size is 20" H  
Available in any custom height

MADE IN THE **USA**



## PICTURED

Shown as 20" H x 77" W  
WHI-2134 PATINA  
available in all Whisper &  
Hemingway Linen Collection colors





# SUITE

## DETAILS

Standard size is 40" H  
Available in any custom height

MADE IN THE USA



## PICTURED

Shown as 40" H x 77" W

WHI-2134 PATINA

available in all Whisper &  
Hemingway Linen Collection colors





# TOWNHOUSE

## DETAILS

Standard size is 60" H  
Available in any custom height

MADE IN THE USA



## PICTURED

Shown as 60" H x 77" W  
WHI-2134 PATINA  
available in all Whisper &  
Hemingway Linen Collection colors





# PENTHOUSE

## DETAILS

Standard size is 80" H  
Available in any custom height

MADE IN THE USA



## PICTURED

Shown as 80" H x 77" W

WHI-2134 PATINA  
available in all Whisper &  
Hemingway Linen Collection colors



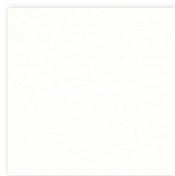


# RESORT

## DETAILS

Standard size is 24" H  
Available in any custom height

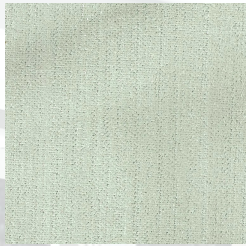
MADE IN THE USA



## PICTURED

Shown as 24" H x 60" W  
WHI-2116 BRILLIANT WHITE  
available in all Whisper &  
Hemingway Linen Collection colors





COLOR 1



COLOR 2



COLOR 3



COLOR 4



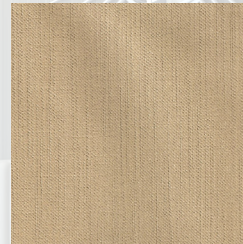
COLOR 6



COLOR 7



COLOR 9



COLOR 14



COLOR 15



COLOR 18



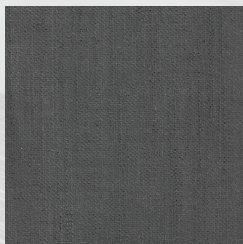
COLOR 19



COLOR 22



COLOR 28



COLOR 3



COLOR 33



# ALLEGRO

CONTRACT COLLECTION

## SPECIFICATIONS:

Contents: 50% Cotton, 50% Rayon

Fabric Width: 56"

Weight: 320 Grams/Meter<sup>2</sup>

Abrasion Resistance: 750,000 Rubs

Clean only with water-based shampoo or foam upholstery cleaner. Do not over wet. Do not use solvents to spot clean. Pile fabrics may require brushing to restore appearance. Cushion covers should not be removed and laundered.  
Applications: Furniture, Window & Bedding



# DEPARTURES

COLLECTION

## SPECIFICATIONS:

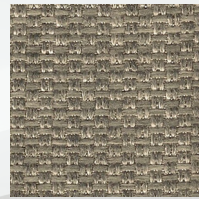
Contents: 100% Polyester

Finish: Knit Backing

Fabric Width: 60"

Abrasion Resistance: Exceeds 100,00 Double Rubs

Dry Clean Only.



SHALE



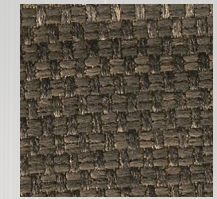
SISAL



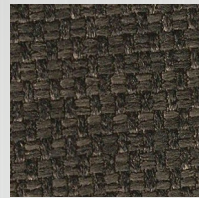
RAFFIA



FLAX



FLANNEL



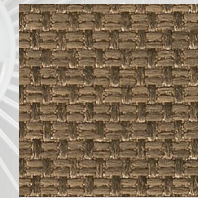
CARBON



JAVA



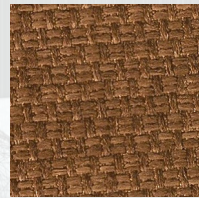
HICKORY



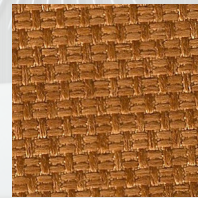
BARK



JUTE



TOBACCO



GINGER



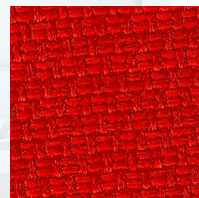
TURMERIC



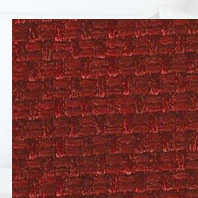
CITRUS



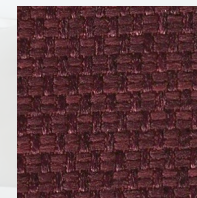
MARMALADE



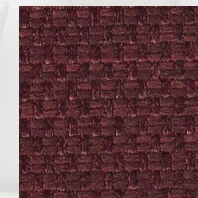
CHERRY



CRANBERRY



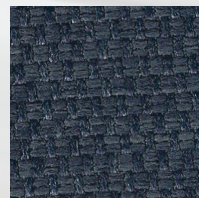
RASPBERRY



PLUM



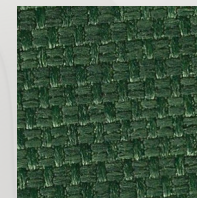
BLACKBERRY



BLUFFIN



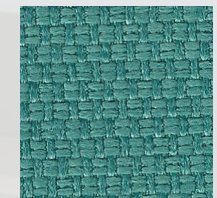
PEACOCK



EVERGREEN



KIWI



SURF



LILAC



FUCHSIA



DAFFODIL



FEATHER





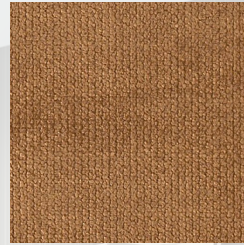
CALYPSO



TRUFFLE



FAWN



HICKORY



JAVA



COLONIAL



LEAF



GRAPE



DOE



SMOKE



CHARCOAL



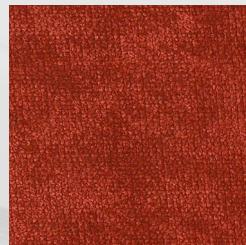
TAUPE



OYSTER



MINK



CHIANTI



**ELANCE**  
CONTRACT COLLECTION

**SPECIFICATIONS:**

Contents: 88% Polypropylene, 9% Acrylic, 3% Spandex

Weight: 333 Grams/Meter<sup>2</sup>

Fabric Width: 57"

Abrasion Resistance: 40,000 Rubs



# VIBRANCE

COLLECTION

## SPECIFICATIONS:

Contents: 100% Polyurethane

Finish: Brushed Woven Backing

Fabric Width: 54"

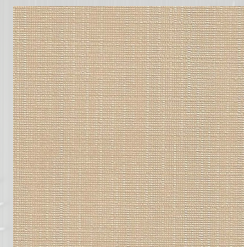
Abrasion Resistance: 240,000 Double Rubs

Clean only with water-based shampoo or foam upholstery cleaner. Do not over wet. Do not use solvents to spot clean. Pile fabrics may require brushing to restore appearance. Cushion covers should not be removed and laundered.

Applications: Furniture, Window & Bedding



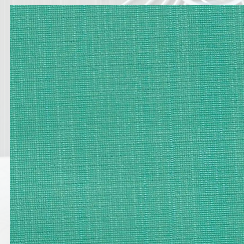
SHIMMER



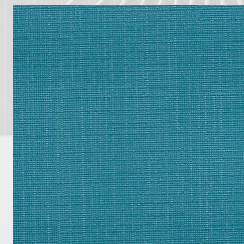
SPARKLE



PEWTER



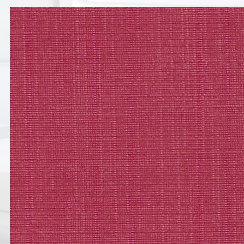
BERYL



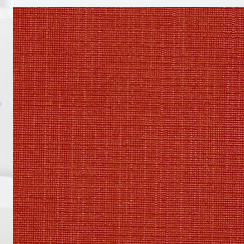
TOPAZ



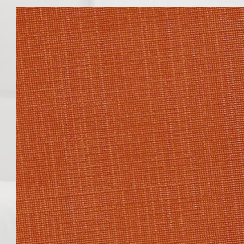
LAPIS



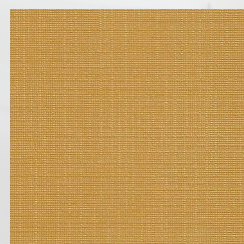
TOURMALINE



CARNELIAN



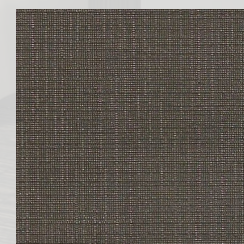
CITRINE



GLITZ

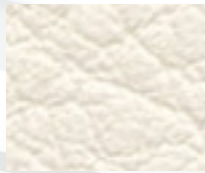


MICA



OBSIDIAN





WHI-2117 BONE



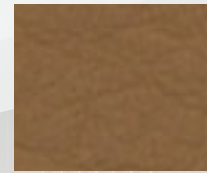
WHI-2118 CAMEL



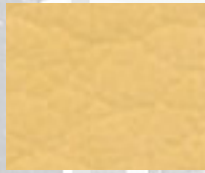
WHI-2119 GRAVEL



WHI-2120 ANTELOPE



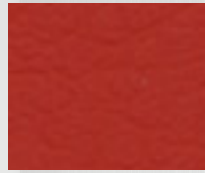
WHI-2121 CAPPUCCINO



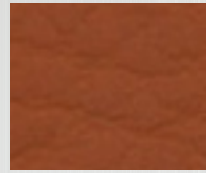
WHI-2122 SISAL



WHI-2123 LUGGAGE



WHI-2124 SALSA



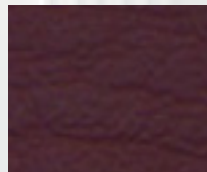
WHI-2125 CINNAMON



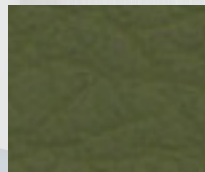
WHI-2126 BORDEAUX



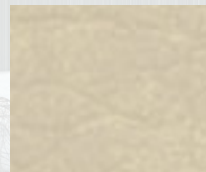
WHI-2127 MERLOT



WHI-2128 NIGHTSHADE



WHI-2129 FOREST



WHI-2130 KHAKI



WHI-2131 GREEN TEA



WHI-2132 CAVERN MOSS



WHI-2133 LODEN



WHI-2134 PATINA



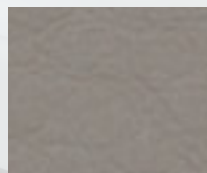
WHI-2135 ANTHRACITE



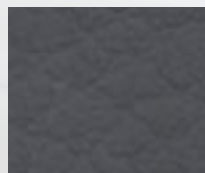
WHI-2136 CERULEAN



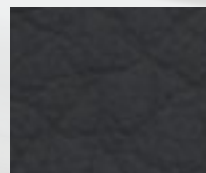
WHI-2137 NAVY



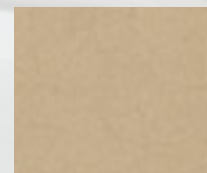
WHI-2138 ELEPHANT



WHI-2139 CHARCOAL



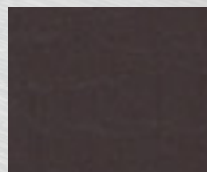
WHI-2140 BLACK



WHI-2141 CASHEW



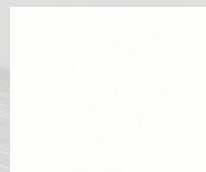
WHI-2142 COGNAC



WHI-2143 ESPRESSO



WHI-2144 SANGRE



WHI-2116 BRILLIANT WHITE

# WHISPER

CONTRACT COLLECTION

## SPECIFICATIONS:

Backing: Hi-Loft™  
100% Polyester  
Finish: Superior Abrasion  
(CFFA 1-a, ASTM D-4157)  
(100,000 cycles, Wyzenbeek #10 Cotton Duck)  
Antibacterial: AATCC Test Method 147-2004  
Anti-fungal: ASTM G21-09  
Anti-static Finish  
Cold Crack -20°F  
Heat Sealable  
Mildew Resistant  
Napa Topcoat  
Sulfide Stain Resistant (all colors)  
UV Stabilized Pigments  
(Xenotest: AATCC TM 16-3 / NTC 1479)  
(1,000 hours)  
Content: Vinyl | Urethane Topcoat

## GENERAL CARE AND CLEANING GUIDE

**Step 1:** For light soiling, a solution of 10% household liquid dishsoap in warm water, applied with a soft damp cloth. Rinse with clean water and dry.

**Step 2:** For heavy soiling, dampen a soft white cloth with a one to one (1:1) solution of Fantastik® and water or Formula 409® and water. Rub gently and rinse with a water dampened cloth.

**Step 3:** For more difficult stains, dampen a soft white cloth with a solution of household bleach (10% bleach / 90% water). Rub gently and rinse with a water dampened cloth to remove bleach concentration. Do not use with alcohol based cleaning agents!



# HEMINGWAY LINEN

HOME COLLECTION

## SPECIFICATIONS:

Contents: 36% Polyester 16% Linen 26% Cotton  
22% Viscose

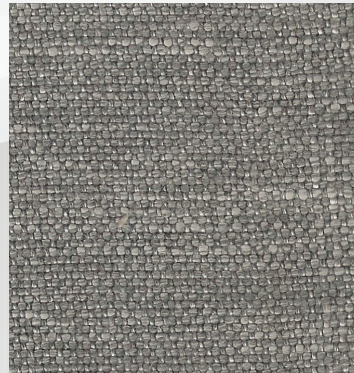
Fabric Width: 56"

Abrasion Resistance 30,000 Double Rubs

Weight: 420 Grams per square inch

Professional Dry Clean Only

Applications: Furniture, Window & Bedding



SLATE



BIRCH



SAND



LATTE



WHEAT



WALNUT



UMBER



LINEN



CHARCOAL



## WALL MOUNTED HEADBOARD HIGHLIGHTS

## HEADBOARD CONFIGURATIONS

**MADE IN THE USA**

**SHIP IN 3-4 WEEKS UPON RECEIPT OF (C.O.M.) FABRIC**

**FOB TENNESSEE**

**ALL STYLES CAN BE CUSTOM SIZED**

**“S” BRACKET HANGING KIT INCLUDED**

**HORIZONTAL PANEL SECTIONS IN 15” 20” & 30” WIDTHS**

**FOR PRODUCT DETAIL REFER TO PRICE LIST**

**SOLID HARDWOOD FRAME**

**1 3/4” - 2” HEADBOARD DEPTH**

**3/4” SOLID HARDWOOD FRAME**

**STANDARD KING & QUEEN BED WIDTHS**

### CONTACT US

**P** 800.590.8978 **F** 800.886.0166

MARIO@BLENDHOSPITALITY.COM

WWW.BLENDHOMEFURNISHINGS.COM

CUSTOMER SERVICE

NIKKI CASS DAKOUVANOS

**P** 800.590.8978 **F** 800.886.0166

CUSTOMERSERVICE@BLENDHOSPITALITY.COM

STYLE	PANEL QTY	PANEL HEIGHT	TOTAL HEIGHT
ACME	3	20”	60”
CLUB	4	30”	60”
COSTA	2	30”	30”
DASH	2	20”	40”
FAB	3	20”	60”
MODA	4	15”	60”
NUVO	3	20”	60”
PARK	3	20”	60”
PRIME	3	20”	60”
SOBE	3	15”	45”
SOHO	2	24”	48”
STUDIO	1	20”	20”
SUITE	2	20”	40”
TOWNHOUSE	3	20”	60”
PENTHOUSE	4	20”	80”
RESORT	1	24”	24”



**BLEND PRODUCTION COM FORM    SHIP ALL COM FABRIC TO ADDRESS BELOW**

BLEND PRODUCTION FACILITY    Blend Production Facility  
Blend Hospitality    200 West Broad Street  
Blend Home Furnishings    Livingston TN 38570  
WWW.BLENDDHOMEFURNISHINGS.COM    Phone: 800-590-8978  
WWW.BLENDDHOMEFURNISHINGS.COM    Fax: 800-886-0166



**CUSTOMER INFORMATION:** \_\_\_\_\_ **COM INSTRUCTIONS**

- |                  |       |  |
|------------------|-------|--|
| Customer Name    | _____ | 1. Swatch Sample must arrive before production             |
| Contact          | _____ | 2. Please include copy of this form with fabric            |
| Telephone        | _____ | 3. Include drawings & special instructions                 |
| Email            | _____ | 4. Please side mark every roll with the information below: |
| Fax              | _____ | A. Blend Furniture Production                              |
| Order Number     | _____ | B. Customer Name   |
| Special Requests | _____ | C. Order Confirmation Number                               |
|                  |       | D. Purchase Order Number                                   |

**FABRIC & TRIM INFORMATION:** \_\_\_\_\_

Vendor Name \_\_\_\_\_  
Fabric Name or SKU \_\_\_\_\_  
PO# or Side Mark \_\_\_\_\_  
Finished Product \_\_\_\_\_  
Fabric Direction on Product (Pattern) \_\_\_\_\_  
Total Yards \_\_\_\_\_  
Carrier & Tracking Number \_\_\_\_\_

Attach or Scan Swatch Here



# BLEND HOME

## NOTES

---

---

---

---

---

---

---

---

---

---



# BLEND HOME

---

WWW.BLENDDHOMEFURNISHINGS.COM  
800.590.8978